

The Michigan Department of Transportation (MDOT) is working to enhance safety and improve mobility by modernizing the I-75 freeway.

## What Is Being Done?

MDOT is reconstructing 8.6 miles of I-75, including ramps and interchanges; building a high occupancy vehicle (HOV) lane; building supporting enforcement zones; constructing 5 miles of noise walls; constructing berms; and replacing bridges at 14 Mile Road, Maple Road, Rochester Road, Livernois Road, Big Beaver Road, Wattles Road, Long Lake Road, Corporate Drive, and Coolidge Highway.

## Where Is It Being Done?

The project is located on I-75 in Oakland County in the cities of Troy and Madison Heights. Work extends from north of 13 Mile Road to north of Coolidge Highway and includes the 14 Mile Road, Rochester Road, Big Beaver Road, and Crooks Road/ Corporate Drive interchanges.



For updated lane closures, traffic restrictions and detours, visit the project website at:

[www.Modernize75.com](http://www.Modernize75.com)

Or call: **313-518-1078**  
(8 a.m. - 5 p.m. Monday - Friday)

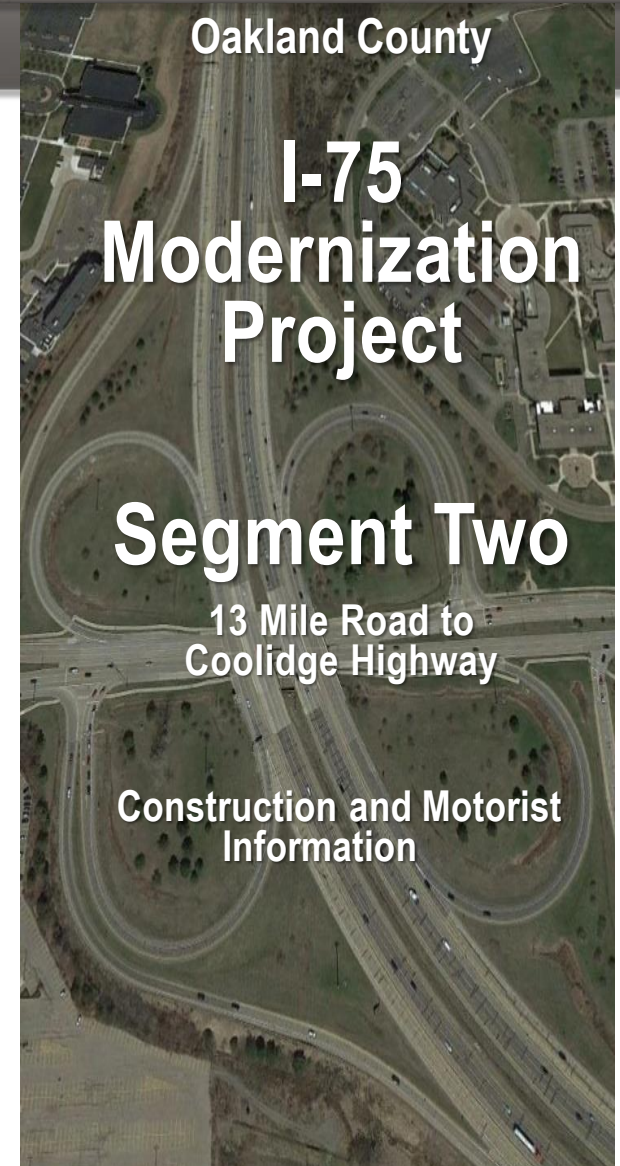
Like us on Facebook:  
[www.facebook.com/Modernize75](https://www.facebook.com/Modernize75)

Follow us on Twitter:  
[www.twitter.com/Modernize75](https://www.twitter.com/Modernize75)

January 2020



MDOT: Providing the highest quality integrated transportation services for economic benefit and improved quality of life.





## 2020

Work continues to completion in the fall.

### BRIDGE CONSTRUCTION ●

- Southbound I-75 bridges over Coolidge Highway, Long Lake Road, Big Beaver Road, Livernois Road, Rochester Road, Maple Road and 14 Mile Road.
- Crooks Road bridge rehabilitation. ●

### ROAD CONSTRUCTION - - -

- Southbound I-75 from north of Coolidge Highway to north of 13 Mile Road.
- Corporate Drive ramps to and from southbound I-75.
- Big Beaver Road ramps to and from southbound I-75.
- Rochester Road ramps to and from southbound I-75.
- 14 Mile Road ramps to and from southbound I-75.

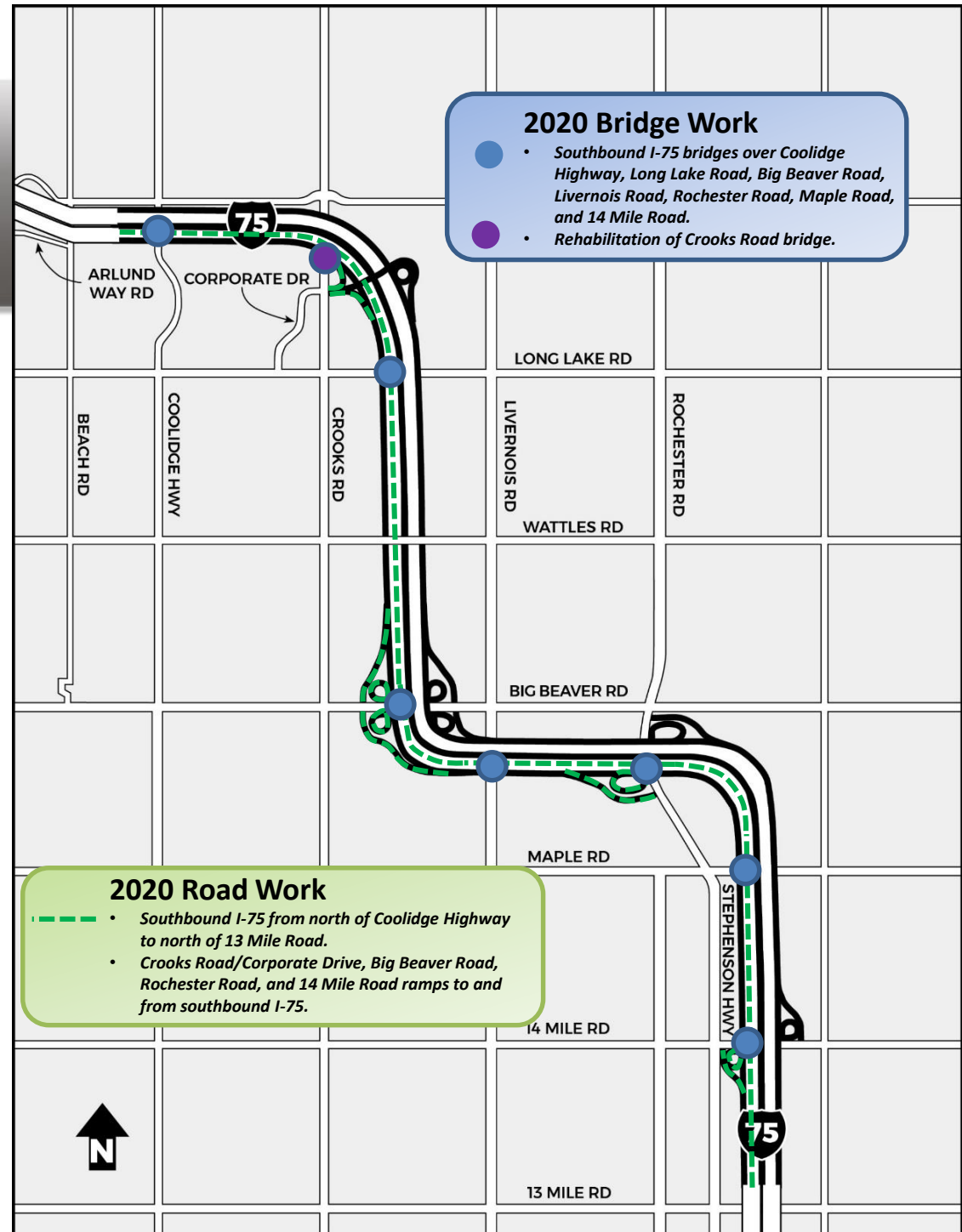
### TRAFFIC IMPACT

- Two lanes will be maintained on the new northbound I-75.
- Motorists and area residents can expect limited nighttime and weekend freeway closures for bridge demolition and beam setting.

Final pavement markings, tree replacements/landscaping and site restoration to follow in 2021.

### 2020 Timeline

Construction/lane closures begin.





## 2020 RAMP CLOSURES

### CROOKS ROAD/CORPORATE DRIVE INTERCHANGE

- Corporate Drive to southbound I-75 (closed).
- Southbound I-75 to Corporate Drive (closed).

### BIG BEAVER ROAD INTERCHANGE

- Southbound I-75 to eastbound Big Beaver Road (closed).
- Southbound I-75 to westbound Big Beaver Road (30-day closure).
- Westbound Big Beaver Road to southbound I-75 (closed).
- Eastbound Big Beaver Road to southbound I-75 (30-day closure).

### ROCHESTER ROAD INTERCHANGE

- Rochester Road to southbound I-75 (closed).
- Southbound I-75 to Rochester Road (30-day closure).

### 14 MILE ROAD INTERCHANGE

- 14 Mile Road to southbound I-75 (closed).
- Southbound I-75 to eastbound 14 Mile Road (closed).
- Southbound I-75 to westbound 14 Mile Road (30-day closure).

